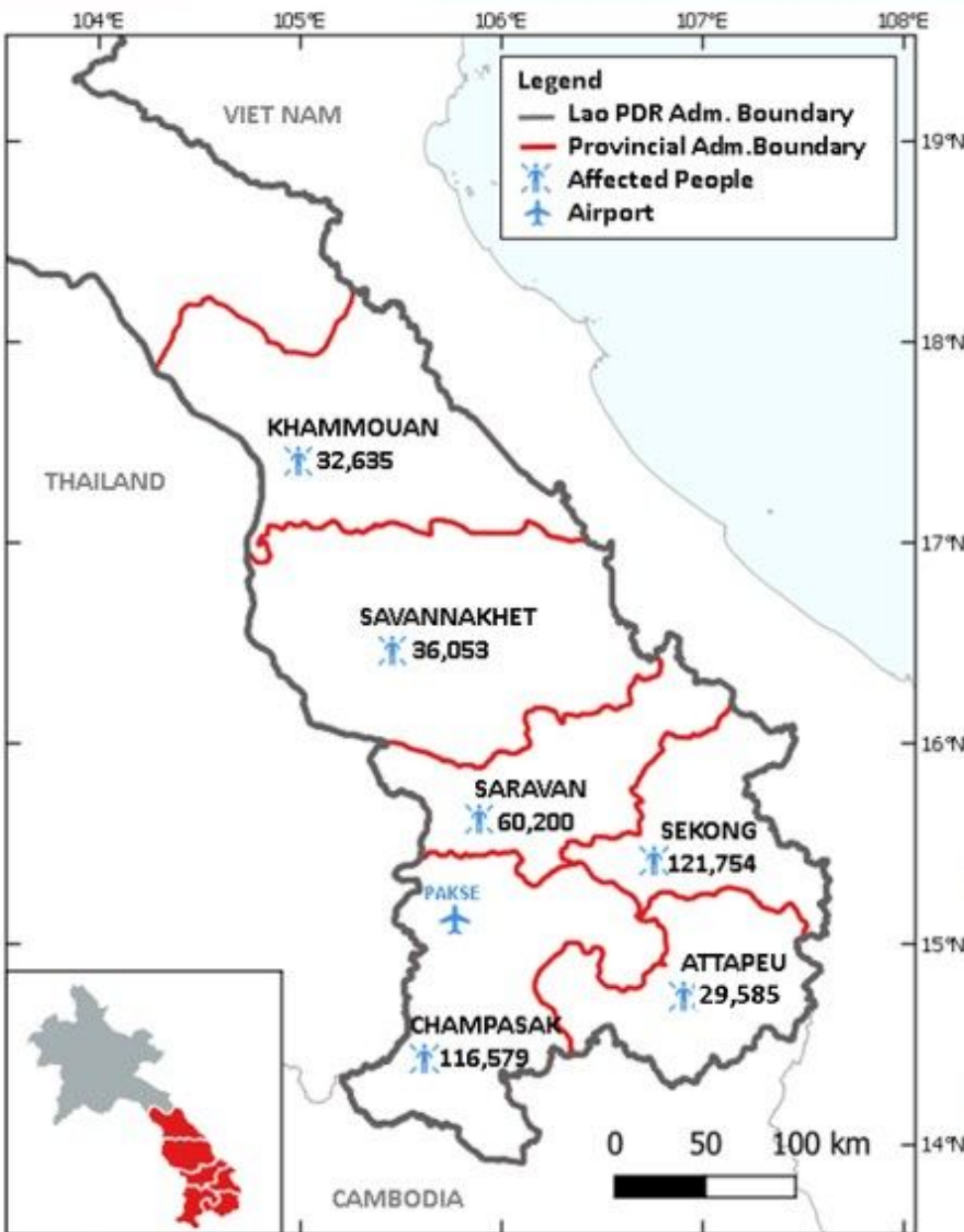


Monday, 09 September 2019, 20:30 hrs (UTC+7)

This Situation Update is provided by the AHA Centre for use by the ASEAN Member States and relevant stakeholders. The information presented is collected from various sources, including but not limited to, ASEAN Member States' government agencies, UN, IFRC, NGOs, and news agencies.

## TROPICAL STORM PODUL AND TROPICAL DEPRESSION KAJIKI, LAO PDR

Correct as at 09 September 2019



### EFFECTS



123K\*  
AFFECTED  
FAMILIES



397K\*  
AFFECTED  
PERSONS



14\*  
DEAD



88K\*  
DISPLACED  
PERSONS



20\*  
EVACUATION  
CENTRES



28\*  
DAMAGED  
HOUSES

\* Estimations are based on data reported/confirmed by the National Disaster Management Organisation of Lao PDR and other verified sources.

### ASEAN RESPONSE

#### ICLT

(In-Country Liaison Team)

Arrived in Vientiane

#### ERAT

(Emergency Response and Assessment Team)

On standby

#### DELSA

(Disaster Emergency Logistic System for ASEAN)

Preparing to mobilise stockpiles

#### IM

(Information Management)

Coordinating with partners to obtain information and maps

- a. On 29 August (Thursday) and 02 September (Monday) 2019, the Department of Meteorology and Hydrology (DMH), Ministry of Natural Resources, Lao PDR reported potential affected areas in the central and southern part of Lao PDR due to the existence of a Low Pressure Area (LPA), Tropical Storm PODUL, and Tropical Depression KAJIKI. Subsequently, flooding was reported in six (6) provinces: ? \Ua a ci UbžGUj UbbU\_\Yř7 \Ua dUgU\_žGUfUj UbžGY\_cb[ žUbX'5řUdYi .
- b. According to the update released by Lao PDR's National Disaster Management Organisation (NDMO) on 05 September (Thursday) 2019 at 09:00 (UTC +7), the Provincial Disaster Prevention and Control Committee called for an emergency meeting and planning for response. On 07 September (Saturday) 2019, the Prime Minister of Lao PDR, Mr. Thongloun Sisoulith, called for an emergency meeting and gave orders to the relevant agencies to quickly assist the affected areas.
- c. Working with the Local Disaster Management and Control Committees in the provincial and district levels, the Government has already deployed emergency response teams from the military, police, and health sectors, equipped with trucks, boats, vehicles, helicopters, tools, and other equipment to evacuate affected people and distribute the following relief: ' ) s fYgW YsVcUhgž &ž&\$s dUW\_gscZs Xf]b\_]b[ 'k UHřfžUbX %\$\$ ŽUa ]mhYbrg.
- d. National Government leaders of Lao PDR visited the affected areas to assess the status of the affected population and to lead the ongoing emergency response. The officials also provided consolation to the victims and support to the responders.
- e. Based on provincial impact data provided by NDMO Lao PDR, 7 \Ua dUgU\_sUbXs GY\_cb[ sUfYsfYgdcbg]V YsZcfs\*% scZš\YřcHU dJZYWYXsdYfgcbg. According to the Pacific Disaster Center's (PDC) All Hazards Impact Model processed on 08 September (Sunday) 2019, the Yghja UHřX'Wld]HU`YI dcgi fY ]g`l G`+) '( 'a ]`]cb.
- f. From the preliminary assessment by UNITAR-UNOSAT, within the analysed extent of about 60,000 km2 in Southern Lao PDR, UřcHU`scZsUVci hř%ž\$\$\$s\_a &scZs'UbXs UddYUfgřcšVYsZccXYX as of 06 September (Friday) 2019. However, this analysis has not been validated yet in the field, and the AHA Centre will closely monitor and report should there be any updated information. The existing data seems to suggest a gap in ground assessment and validation and a lack of evacuation in the more mountainous Attapeu and Sekong.
- g. Continued rainfall is expected in all 6 affected provinces over the course of the week. According to the Mekong River Commission (MRC), two hydrological stations in Khong Chiam and Pakse (just north of Champasek) have forecast that the water levels will steadily fall over the course of the week, with the downstream Pakse station forecast to remain above alarm levels for the rest of the week.
- h. NDMO Lao PDR has identified the following needs:
  - Food: rice, canned fish, drinking water, instant noodles
  - Rescue boats and life jackets
  - Non food items: family kits, personal hygiene kits, kitchen kits, sleeping kits
  - Water treatment equipment



## Cash support

- i. The AHA Centre has mobilised its In-Country Liaison Team (ICLT) to establish direct coordination lines with NDMO Lao PDR on the ground, and to coordinate the delivery and handover of DELSA regional stockpile in Subang, Malaysia to Pakse International Airport in Lao PDR, as requested by NDMO Lao PDR.



a. Tropical Storm PODUL first made landfall in the Philippines on 26 August (Monday) 2019, before exiting and continuing west. On 29 August (Thursday) 2019, Tropical Storm PODUL made landfall in central Viet Nam and continued moving west over Lao PDR and towards Myanmar. This was quickly followed by Tropical Depression KAJIKI, which formed in the South China Sea close to the Vietnam coast on 02 September (Monday) 2019, made landfall in Viet Nam and passed Lao PDR, before moving back out over Viet Nam coast on 06 September (Friday) 2019.

àË The Department of Meteorology and Hydrology (DMH), Ministry of Natural Resources, Lao PDR reported potential affected areas in the central and southern part of Lao PDR due to the existence of a Low Pressure Area (LPA), PODUL and KAJIKI. Subsequently, thunderstorm advisories and heavy rainfall warnings were issued for six (6) provinces: Khammouan, Savannakhet, Champasak, Saravan, Sekong, and Attapeu. This was followed by reports of flooding in all 6 provinces.

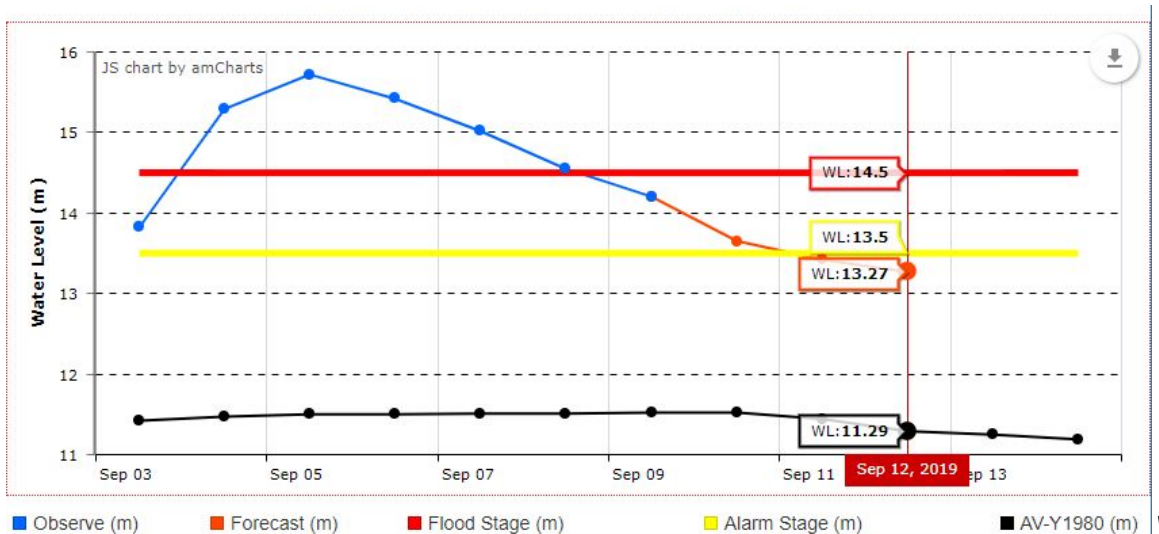
: cfYVUgh'UbX'UbhVbUHX fJg\_s

S

c. Continued rainfall is expected in all 6 affected provinces over the course of the week. The ASEAN Specialised Meteorological Centre (ASMC) generally forecasts above-normal rainfall in the southern portion of Lao PDR for the month of September 2019.

d. According to the Mekong River Commission (MRC), two hydrological stations in Khong Chiam and Pakse (just north of Champasek) have observed that water levels exceeded flood levels at least until 08 September (Sunday) 2019. The water levels are forecast to steadily fall over the course of the week, with the downstream Pakse station forecast to remain above alarm levels for the rest of the week.

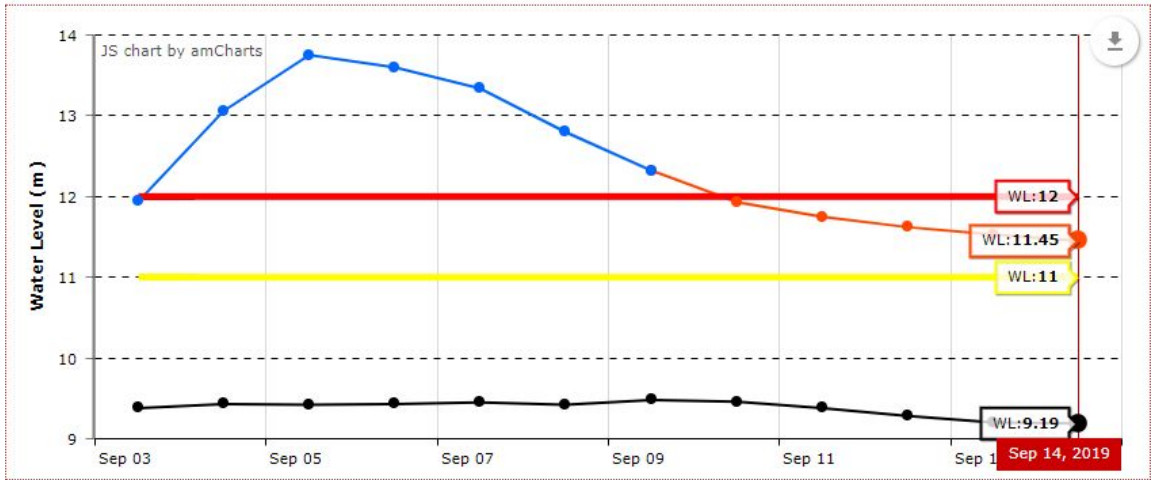
"



: [I i fYs% sCVgYfj YXsUbXsZc fYVUghYXsk UYfs'Yj YsJbs? \cb[ s7\]Ua ž@UcsD8F "s cfYVUghYXs k UYfs'Yj YscZS% "&+sa scbs%&sGYdHYa VYfsfH i fgXUhts&\$% sU'gslYck sh YsJUfa s'Yj YscZS % )" 'a "Gci fW. 'A Y\_cb[ F J] Yf'7ca a Jggjcb

À





■ Observe (m)   
 ■ Forecast (m)   
 ■ Flood Stage (m)   
 ■ Alarm Stage (m)   
 ■ AV-Y1980 (m)

: [[ i fYs&sC VgYfj YXsubXszcfYVUghYXsk UHYfs`Yj Y's]bsDU\_gYzs@UcsD8F "s cfYVUghYXsk UHYfs  
 `Yj Y'scZ%%( ) sa scbs%( sGYdhYa VYfsfGUi fXUhts&\$% sUnsh YsYbXscZh YsZcfYVUghsdYf]cXs]gs  
 ghj`Uvcj Yh Y'UUfa `Yj Y`cZ%%a "Gci fW. A Y\_cb[ F j Yf 7 ca a ]gg]cb



- a. NDMO Lao PDR has identified the following needs:
  - Food: rice, canned fish, drinking water, instant noodles
  - Rescue boats and life jackets
  - Non food items: family kits, personal hygiene kits, kitchen kits, sleeping kits
  - Water treatment equipment
  - Cash support
- b. According to the Pacific Disaster Center’s (PDC) All Hazards Impact Model, the maximum potential population exposure based on flood extent layer provided by the Earth Observatory of Singapore ARIA-SG (EOS ARIA-SG) for the 6 provinces is 197,245 people. Estimated capital exposure is US\$753.4 million, with the following breakdown: 32% from the residential sector, 28% from the service sector, 18% from the industrial sector, and 22% from schools. These estimates are as of 08 September (Sunday) 2019.
- c. The breakdown in impact data by province is given in Table 1 below. Note that the number of affected persons for Attapeu is an estimate based on the reported number of affected families (one family is assumed to consist of five family members).

Dfcj ]bWgS	5ZYWYXs : Ua ]YgS	5ZYWYXs DYfgcbgs	8YUXs	8 ]gd`UWYXs DYfgcbgs	8Ua U[ YXs < ci gYgS
Attapeu	5,917	29,585*	4	-	-
Champasak	36,223	116,579	5	30,014	-
Khammouan	11,855	32,635	-	4,008	28
Saravan	28,514	60,200	2	30,000	-
Savannakhet	16,474	36,053	3	23,868	-
Sekong	24,019	121,754	-	-	9
HchU's	%&' ž\$&s	' - *ž \$*s	% (s	, +ž - \$s	' +s

HUVYs%: [ i fYgZfs]a dUVgS]osh Ys\* sUZYVWXsdfcj ]bWgscZ@UcsD8F "s8UfUscVfU]bYXs Zca 'B8A C 'Uc 'D8F 'Ug'cZ\$, 'GYdHYa VYf fGi bXUht&\$\$% "

- d. Figures for the number of displaced people in Attapeu and Sekong provinces are still to be confirmed even though Sekong is the most affected province (according to the latest data from NDMO Lao PDR, over 30% of the total affected persons come from this province). Topography may have influenced reaching affected areas for assessment.
- e. From the preliminary assessment by UNITAR-UNOSAT, within the analysed extent of about 60,000 km2 in Southern Lao PDR, a total of about 1,000 km2 of land appears to be flooded as of 06 September (Friday) 2019. This preliminary analysis was based on observation from Sentinel-1 imagery acquired on 06 September

(Friday) 2019 (Annex 1). Currently, the reported affected population on the ground is much higher than the preliminary assessment (Table 2), which could be due to the backscattering radar signals that caused underestimate flood extent.

District	Number of Villages	Number of People	Number of Houses	Number of Cattle
Attapeu	96	102,700	3,290	29,585
Champasak	332	540,700	42,350	116,579
Khammouan	101	167,200	5,840	32,635
Saravan	119	195,700	16,250	60,200
Savannakhet	352	600,200	32,680	36,053
Sekong	No apparent flooded area in mapped analysis yet			121,754
Total	1,000	1,606,500	100,410	390,889

The information above is based on the preliminary assessment of the affected population, houses, and cattle in the flooded areas. The actual numbers may vary due to the backscattering radar signals that caused underestimate flood extent.

- f. The floods mostly occur in the valleys along the Mekong River, which forms the border between Lao PDR and Myanmar to the west. Some flooding also occurs towards the central regions of Khammouan and Savannakhet, and along the western provincial borders of Attapeu in the valley floor (Figure 3).



S

F YgdcbgY`Vm; cj Yfba YbhcZ@Jc`D8F "

- a. According to the update released by Lao PDR's National Disaster Management Organisation (NDMO Lao PDR) on 05 September (Thursday) 2019 at 09:00 (UTC +7), the Provincial Disaster Prevention and Control Committee called for an emergency meeting and planning for response, especially to deploy rescue boats for evacuation in collaboration with the army and police. Emergency relief items had been distributed to the affected population.
- b. On 07 September (Saturday) 2019, the Prime Minister, Mr. Thongloun Sisoulith, called for an emergency meeting and gave orders to the relevant agencies to quickly assist the affected areas. Working with the Provincial and District-level Disaster Management and Control Committees, the Government has already deployed personnel and volunteers to evacuate affected people and distribute the following relief: ' ) sfYgW YsVc UhgZ&Z&\$\$sdUW\_gsc ZsXf]b\_]b[ sk UHYfzSubXs%\$\$sZJa ]ns hYbrg.
- c. As of 08 September (Sunday) 2019, emergency response teams from the military, police, and health sectors, equipped with trucks, boats, vehicles, helicopters, tools, and other equipment, have been deployed to the affected provinces. National Government leaders of Lao PDR visited the affected areas to assess the status of the affected population and to lead the ongoing emergency response. The officials also provided consolation to the victims and support to the responders.
- d. According to Xinhua News, Ministry of Labor and Social Welfare is mobilising funding and relief supplies and is calling on state organisations and private businesses to assist the victims.
- e. NDMO Lao PDR, through the National Focal Point (NFP), made a request for assistance to the AHA Centre on 08 September (Sunday) 2019, calling for logistical relief items support.

S

F YgdcbgY`Vm hY`5 < 5 `7 YbhfY"

- a. The AHA Centre has expressed condolences to Lao PDR and offered support from regional resources, including mobilising ASEAN Emergency Response and Assessment Team (ASEAN-ERAT), providing relief items from the Disaster Emergency Logistic System for ASEAN (DELSA) regional stockpile, and facilitating the deployment of capacities available in the region, such as from the ASEAN Standby Arrangements.
- b. The AHA Centre Emergency Operations Centre (EOC) alert level was raised to Orange (Response Preparation) on 08 September (Sunday) 2019 and is now at Red (Active Response).
- c. The AHA Centre has mobilised its In-Country Liaison Team (ICLT) which consists of Janggam Adhityawarma (ICLT Leader), Halanson Roy Simanjuntak, and Jeerasak Yaemsee to Vientiane, Lao PDR today (09 September 2019). ICLT will be assigned to establish direct coordination lines with NDMO Lao PDR on the ground, with the first meeting expected tomorrow on 10 September (Tuesday) 2019.





- d. The AHA Centre and ICLT are coordinating the delivery of relief supplies, as requested by NDMO Lao PDR, from the DELSA regional stockpile in Subang, Malaysia to Pakse International Airport in Lao PDR.
- e. The AHA Centre is in contact with partners (ADRC, Sentinel Asia, EOS ARIA-SG, PDC, UNITAR-UNOSAT, and Map Action) for the satellite imageries, spatial analysis, and map products.

S

F YgdcbgY`VmiCh\Yf`<i a Ub]hUf]Ub`DUfthYfgs

- a. Pacific Disaster Center (PDC) produced a hazard brief on flood impact and exposure estimates on 08 September (Sunday) 2019, in collaboration with the AHA Centre.
- b. UNITAR-UNOSAT provided map data on the likely flood extent as of 06 September (Friday) 2019.
- c. MapAction has been contacted to provide remote mapping support to the AHA Centre.
- d. United Nations Humanitarian Response Depot (UNHRD) is supporting the AHA Centre's logistical operations and deployment of relief items from the DELSA stockpile.

F YgdcbgY`VmiCh\Yf`DUfthYfgs'

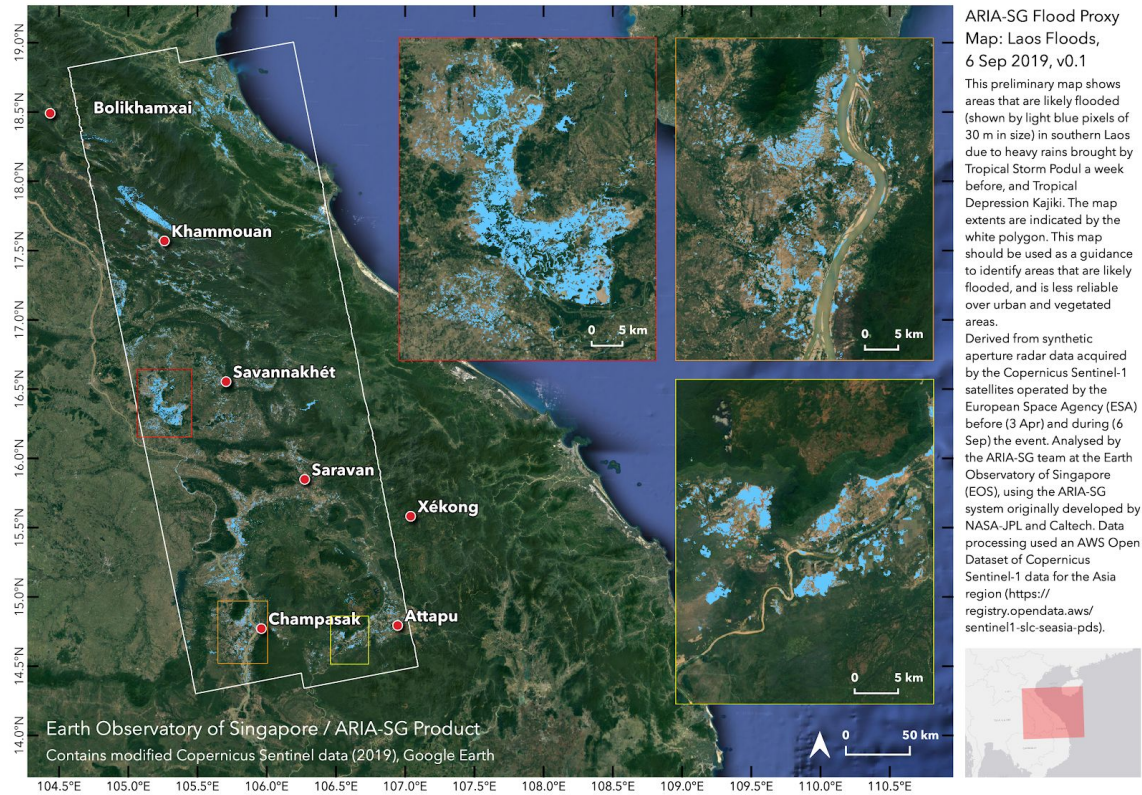
- a. The AHA Centre, in lieu of NDMO Lao PDR, requested activation of Sentinel Asia's Emergency Observation Request (EOR) through the Asian Disaster Reduction Center (ADRC) on 06 September (Friday) 2019. We received first map data on likely flood extent from the ARIA-SG team at the Earth Observatory of Singapore based on satellite data.



H\Y '5 < 5 '7 YbhfY g'd`Ubgs

- a. The AHA Centre has expressed condolences to Lao PDR and offered support from regional resources, including mobilising ASEAN Emergency Response and Assessment Team (ASEAN-ERAT), providing relief items from the Disaster Emergency Logistic System for ASEAN (DELSA) regional stockpile, and facilitating the deployment of capacities available in the region, such as from the ASEAN Standby Arrangements.
- b. DELSA stockpiles are being mobilised for delivery to Pakse International Airport (PKZ) via military aircraft or commercial charter with target ETA on 10 September (Tuesday) 2019.
- c. By tomorrow (10 September 2019), a field call with EOC Jakarta will be held, while ICLT Leader will meet with NDMO Lao PDR in the morning, the rest of the ICLT team will proceed to Pakse International Airport. ICLT Leader, with NDMO Lao PDR, will follow to Pakse in the following afternoon.
- d. ASEAN-ERAT has been activated and is currently on standby for possible deployment, in the event of escalation in the flooding situation and request for support from Lao PDR.





: [ i fYs(.sA UdscZUZYVWXsUfYUgs]bs@UcsD8F s] ck ]b[ sh Ys] YnsZccXYXsUfYUgs]] \hsv/ i Ys d]] YgtzVUgYXscbsgnbh Yh]VUdYfhi fYsfUXUfsgUfY~]YsXUUsVYZcfYsf\$' s5df]s&\$\$ tsUbXs Xi f]b[ sff\* sGydhYa VYfs&\$\$ tsA YsZccXs]j Ybh's5bUmj]gsk UgsXcbYsVnsh Ys5F -5!G; shYUa s Uhh Y'9Ufh C VgYfj UrcfmcZG]b[ UdcfY fPCGEZcfGYbh]bY'5g]U's

DfYdUfYX Vmss  
The AHA Centre - Emergency Operations Centre (EOC)

**56CI HH<9'5<5'79BHF 9s**

The AHA Centre - ASEAN Coordinating Centre for Humanitarian Assistance on disaster management - is an inter-governmental organisation established by 10 ASEAN Member States – Brunei Darussalam, Cambodia, Indonesia, Lao PDR, Malaysia, Myanmar, Philippines, Singapore, Thailand and Viet Nam - to facilitate the cooperation and coordination among ASEAN Member States and with the United Nations and international organisations for disaster management and emergency response in the region.

The ASEAN Coordinating Centre for Humanitarian Assistance on disaster management (AHA Centre), Graha BNPB 13<sup>th</sup> Floor, JL Raya Pramuka Kav 38, East Jakarta, 13210, Indonesia  
Phone: +62-21-210-12278 | [www.ahacentre.org](http://www.ahacentre.org) | email: [info@ahacentre.org](mailto:info@ahacentre.org)

- 7cbHWhs
- 1) Lawrence Anthony Dimailig, Assistant Director, Disaster Monitoring & Analysis, [lawrence.dimailig@ahacentre.org](mailto:lawrence.dimailig@ahacentre.org)
  - 2) Shahasrakiranna, Disaster Monitoring & Analysis Officer, [shahasrakiranna@ahacentre.org](mailto:shahasrakiranna@ahacentre.org)
  - 3) Justin Chin, Disaster Monitoring & Analysis Intern

