



ONE ASEAN
ONE RESPONSE

WEEKLY DISASTER UPDATE

Week 26
22 – 28 June 2020

- ahacentre.org
- ahacentre
- @ahacentre
- @ahacentre

The AHA Centre, GRAHA BNPB 13th floor,
Jl. Raya Pramuka Kav. 38, East Jakarta 13120 Indonesia

SOURCES

ASEAN Disaster Monitoring & Response System (DMRS);
ASEAN Specialised Meteorological Centre (ASMC); Pacific
Disaster Center (PDC-Global); Joint Typhoon Warning
Center (JTWC)

Indonesia: BNPB, BMKG, PVMBG;
Philippines: PHIVOLCS
Thailand: DDPM

Various news agencies

DISCLAIMER

The AHA Centre was established in November 2011 by the
Association of Southeast Asian Nations (ASEAN) Member
States to facilitate cooperation and coordination among
Member States, relevant agencies of the United Nations
and international organisations in disaster management and
emergency response.

This update consists of significant natural disaster events
that occurred in ASEAN Member States – Brunei
Darussalam, Cambodia, Indonesia, Lao PDR, Malaysia,
Myanmar, Philippines, Singapore, Thailand, and Viet Nam.
The disasters recorded include Drought, Flood, Earthquake,
Tsunami, Volcano, Wind, Landslide, and Storm.

The use of boundaries, geographic names, related
information, and potential considerations for response are
for references, not warranted to be error-free or implying
official endorsement from ASEAN Member States.

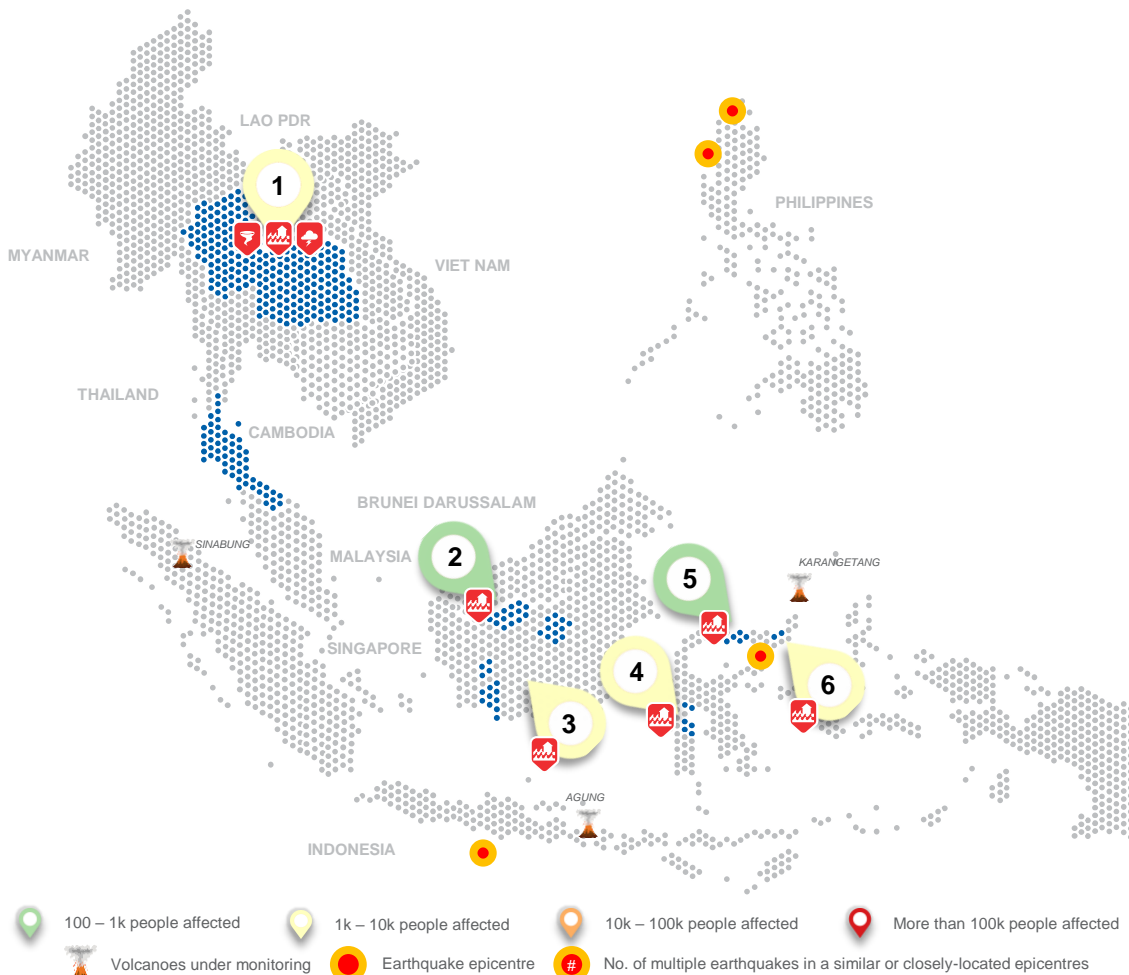
© 2020 AHA Centre.
All rights reserved.

For inquiries, comments, and/or suggestions,
you may reach us through dma@ahacentre.org



You are receiving this email because you are
registered in our distribution list.

SCAN TO SUBSCRIBE



- 100 – 1k people affected
- 1k – 10k people affected
- 10k – 100k people affected
- More than 100k people affected
- Volcanoes under monitoring
- Earthquake epicentre
- No. of multiple earthquakes in a similar or closely-located epicentres

REGIONAL TALLY



Note: Estimations are based on data reported/confirmed by National
Disaster Management Organisations of each respective ASEAN Member
State and other verified sources

01 Thailand, Flooding and Windstorms in North, Eastern, and Southern Regions

24 Jun 2020 | More details at: [ADinet Report 1700](#)

02 Indonesia, Flooding in Kapuas Hulu, West Kalimantan

25 Jun 2020 | More details at: [ADinet Report 1702](#)

03 Indonesia, Flooding in Central Kalimantan

25 Jun 2020 | More details at: [ADinet Report 1703](#)

26 Jun 2020 | More details at: [ADinet Report 1705](#)

27 Jun 2020 | More details at: [ADinet Report 1708](#)

04 Indonesia, Flooding in Luwu, South Sulawesi

26 Jun 2020 | More details at: [ADinet Report 1704](#)

05 Indonesia, Flooding in Gorontalo Province

27 Jun 2020 | More details at: [ADinet Report 1709](#)

06 Indonesia, Flooding in Bolaang Mongondow Selatan, North Sulawesi

27 Jun 2020 | More details at: [ADinet Report 1707](#)

REGIONAL SUMMARY:

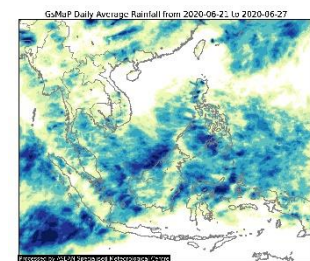
Multiple localised flooding events have occurred due to high-intensity rainfall and overflowing of rivers in Indonesia (8 regencies at 5 provinces). Meanwhile, flooding, winds, and storms in five (5) provinces of Thailand were reported by the Thailand Department of Disaster Prevention and Mitigation ([DDPM](#)). These events affected 8.4K persons, displaced 1.1K persons, and damaged 2.2K houses.

HIGHLIGHT:

The most significant flood as reported by Indonesia's Badan Nasional Penanggulangan Bencana ([BNPB](#)), occurred in Luwu Regency in South Sulawesi Province, which affected 2,950 people. The flood of 30-50 cm inundated four Sub-regions/districts and three villages.

Residents of Bolaang Mongondow Selatan were exposed to two to three seconds of "quite strong" shaking on 23 June when a M6.0 earthquake occurred in the North Sulawesi region as reported by [BNPB](#) and Badan Meteorologi, Klimatologi dan Geofisika ([BMKG](#)). The earthquake reportedly had no tsunami potential or immediate impacts.

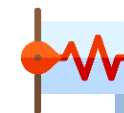
HYDRO-METEO-CLIMATOLOGICAL:



The ASEAN Specialised Meteorological Centre ([ASMC](#)) reported that the Southwest Monsoon has been in effect in the ASEAN region since late May 2020, where more rain falls over the northern ASEAN region compared to the southern region. The monsoon rain band over the northern region is bringing increased shower activities.

There were no active tropical cyclones observed in the region ([PDC/JTWC](#)).

GEOPHYSICAL:



Four (4) significant earthquakes ($M \geq 5.0$) were recorded in the region by the Philippine Institute of Volcanology and Seismology ([PHIVOLCS](#)) and Indonesia's Badan Meteorologi, Klimatologi dan Geofisika ([BMKG](#)). Meanwhile, three (3) volcanoes in Indonesia (Karangtang, Agung, Sinabung) under Alert Level III - Siaga ([PVMBG](#)) are under close monitoring. Lastly, despite recent volcanic activity from Semeru and Dukono in Indonesia, they remain on Alert Level II – Waspada per [PVMBG](#).

OUTLOOK:



The [ASMC](#) forecasts wetter conditions over the ASEAN region near the equator. Warmer conditions are also expected over southern parts of the maritime continent and mainland Southeast Asia. Based on a regional assessment of extremes, the [ASMC](#) sees a moderate increase in chance of a heavy rainfall event, low chance of extended dry conditions, and very likely extreme hot conditions in some parts of the region.